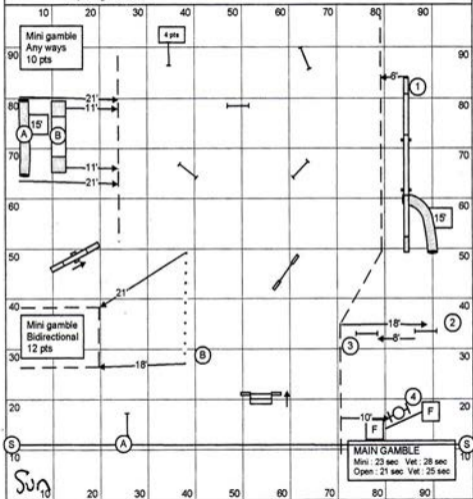
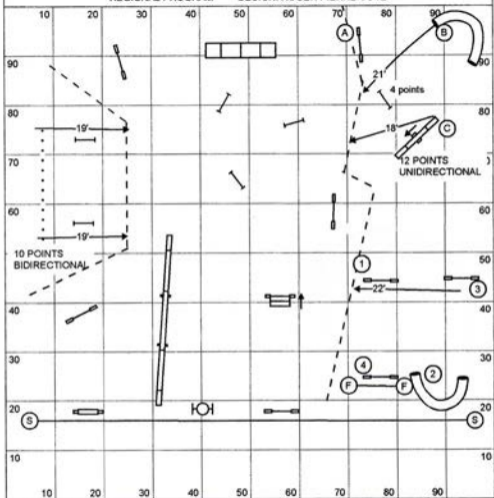


Opening : 40 sec



REGIONAL PROGRAM

DESIGN: ROGER-PIERRE CÔTE



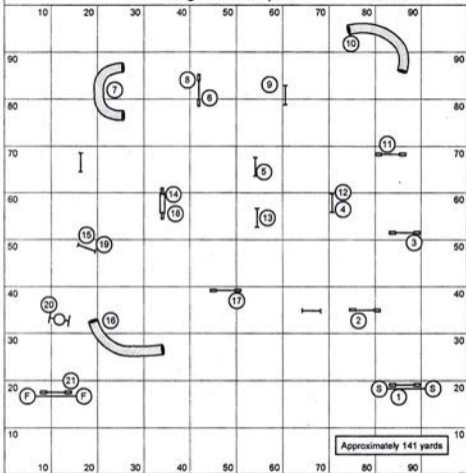
COTE R.P. - GAMBLER - 102

REGIONAL GAMBLER COURSE

OPENING 40 sec.      GAMBLE OPEN; 18 sec.      MINI 20 sec.  
 VET; 22 sec.      VET; 24 sec.

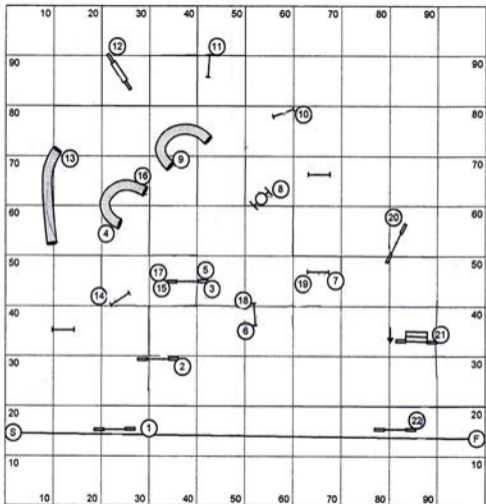
# Regionals Jumpers

John Willits



Distance: \_\_\_\_\_ Yards  
 Course times: Regular/Special  
 Veteran

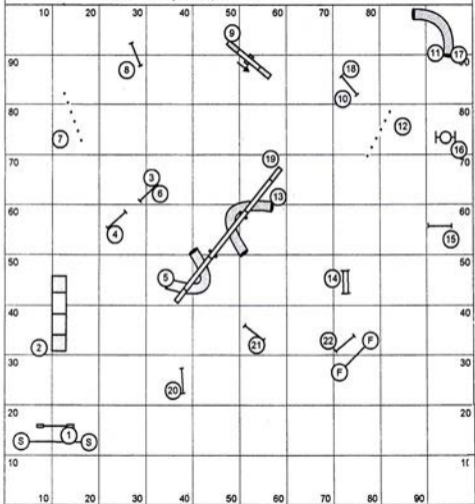
Yds/Sec: Open 4.1 Mini 3.9  
 Open \_\_\_\_\_ Mini \_\_\_\_\_  
 Open \_\_\_\_\_ Mini \_\_\_\_\_

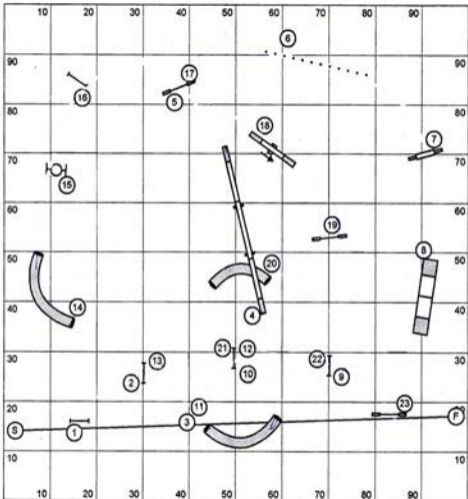


Regional Jumpers 102  
Shannon Teahen

Mini @ 3.55 = \_\_\_\_\_ Open @ 3.75 = \_\_\_\_\_  
 Vet = \_\_\_\_\_ Vet = \_\_\_\_\_

2010 Regionals Standard RS 102  
 Judge: Deborah Rhodes  
 EST YPS = Open: 3.10; Mini = 2.85





Regional Standard 101 - Darcy Bennett

Open/Spec SCT (3.10y/s): Mini/Spec SCT